

THE SerCAB EVOLUTION SERIES



Your organization has invested thousands, or perhaps even millions of dollars on the *IT* equipment required to meet the ever growing demands you face daily. You need an affordable and flexible equipment housing solution that can keep up with this growth. This solution must allow you to act quickly and to keep pace in a rapidly evolving business world. ● The SerCAB Evolution Series offers various levels of housing options to safeguard your *IT* equipment and provides protection unsurpassed by any other solution. ● Above and beyond the storage and organization of equipment, the SerCAB Evolution Series offers a line of enhancements which allow a basic unit to be upgraded over time with options including cable management, ventilation and cooling as well as fire detection and suppression. What's more, environmental and security monitoring devices can be installed to ensure your investments remain safe and sound. ● You can also choose to maximize efficiency by combining our SerCAB Evolution Series units with one or several of our UPS systems to eliminate the impact of power shortages, irregularities or interferences. ● Unlike a traditional computer room, our SerCAB Evolution Series units can easily be relocated should your office move or undergo renovations. We also offer short or long-term leasing options to accommodate your needs. ● Our team of experts offers site-specific customized solutions and can recommend the best optional enhancements to match your growing needs. These ready-to-install options can be added at any time, meeting your expansion and budget requirements. Because our enhancements have been pre-engineered and pre-tested, installation time is optimized. ● Backed by a comprehensive one year warranty, offered by Stanex, a leader in the fire protection and power distribution fields and 24/7 service, your data and equipment are safe within the protective confines of the SerCAB.

SerCAB 3

THE **SerCAB 3 EVOLUTION SERIES MAX/COOL** MODEL IS A SENSIBLE ALTERNATIVE TO THE TRADITIONAL AIR CONDITIONED COMPUTER ROOM AND IS FIRE DETECTION/SUPPRESSION READY. THIS SOLUTION ALLOWS FOR MAXIMUM PROTECTION OF YOUR INVESTMENT BY OFFERING YOU THE ULTIMATE PEACE OF MIND. Today's business reality requires you to keep your *IT* investments safe in order to survive. How well is your equipment protected from theft, water and humidity, power failures, overheating and fire? *Data loss* and *equipment failure* - these are not words you ever want to hear associated with your mission critical equipment and applications. Available through leasing as well as purchase, the **SerCAB 3 EVOLUTION SERIES MAX/COOL** model is a turnkey solution that is perfectly tailored for those situations where your housing needs to be agile. Easy to relocate, the **SerCAB 3 MAX/COOL** unit allows your organization to maintain its daily operations in a seamless fashion when environmental situations such as renovations or relocations might otherwise disrupt your business.



FEATURES

- Solid steel construction with welded frame: 36" D x 26" W x 83" H (variable depth & height available)
- Set of 4 levelling feet
- Maximum equipment installation space: 38U
- Tinted acrylic front door with rubber gaskets and 2 lift & turn locks
- Solid steel back door with rubber gaskets and 2 lift & turn locks, housing an autonomous A/C unit (see *Selection guide* for available capacities)
- Two solid steel flush-mounted side panels with rubber gaskets
- Fan top cover with a minimum of two 100 cfm fans
- Three pairs of vertical panel mounting angles (PMA)
- Solid steel cabinet floor/bottom
- Door status monitoring
- Control panel
- Available in black, grey or computer beige

BENEFITS

All the benefits of the **SerCAB 1 INTRO** model PLUS:

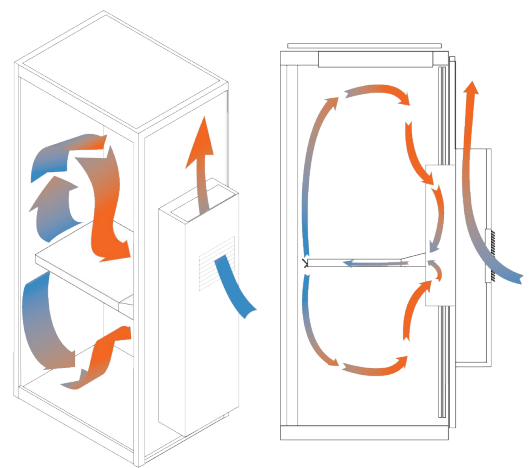
- Locally and/or remotely monitored A/C unit and door status
- Provides your equipment with temperature, humidity and dust control
- Ideally suited for multi-cabinet applications
- All-in-one: -Storage
-Environmental
-Protection
- Cost-effective compared to a traditional protected computer room

APPLICATIONS

- Networking
- Server hosting
- Telecommunications: Voice over IP

COMPATIBLE OPTIONAL ENHANCEMENTS

- Structure variations and add-ons
- Environmental controls
- Cooling (Base unit included – see *Selection guide* for other options)
- Access controls
- Video security
- Fire detection by spot detection
- Fire detection by air sampling
- Fire suppression
- Uninterruptible power supply (UPS)



OPTIMAL CONFIGURATION SHOWN

ALSO OFFERED BY STANEX

WITH THE **SerCAB UNIK SERIES**, YOUR ORGANIZATION HAS THE OPPORTUNITY TO DESIGN ITS OWN CABINET WITH UNIQUE FEATURES FOR SPECIAL APPLICATIONS. The flexibility of the **SerCAB** enclosures allows us to provide your organization with custom solutions for special applications that extend beyond the walls of a traditional computer room facility. For example, our **TRAFX UNIK SERIES** model ensures that traffic light control equipment at critical road intersections remains safe from the elements and from outside tampering.

OPTIONAL ENHANCEMENTS

ENVIRONMENTAL CONTROLS



TEMPERATURE SENSOR

WILL CONTINUOUSLY MONITOR AND REPORT PRESET AMBIENT ALARM TEMPERATURES, HI AND LOW.
The temperature sensor ensures equipment is protected in a temperature range that will not damage your equipment and notifies you when the internal temperature exceeds the operating parameters.



WATER SENSOR

SUBFLOOR WATER SENSING.

Can be installed to detect a layer of water as minute as 1/16" (1.5875mm) in depth. Undetected water presence, such as that caused by leaking pipes, activated sprinkler heads, blocked drains or vandalism can lead to equipment failure and data loss.



HUMIDITY SENSOR

MAINTAINS A SET LEVEL OF HUMIDITY TO PREVENT CONDENSATION AND CORROSION.

Provides temperature and humidity control for local and remote monitoring.

ACCESS CONTROLS



MAGNETIC DOOR CONTACTS

PROVIDE DOOR STATUS AND REPORTING.

A secure door allows for efficient monitoring of your equipment, proper fire suppression capability in the event of an emergency situation, controlled access to your equipment located inside the SerCAB, and proper cooling of your equipment by the SerCAB's air conditioning unit.



CARD READER (WITH OPTIONAL KEYPAD)

PROVIDES MULTI-LEVEL SerCAB ACCESS SECURITY.

The card reader with integrated keypad provides access control systems with the convenience of both card access and keypad entry in one device.

COOLING



AIR CONDITIONING

PROVIDES UP TO 12000 BTU/HOUR, 3500 WATTS (1 TON) OF CONTINUOUS COOLING.

The air conditioning system effectively acts as an optional SerCAB environmental control system.

CLOSED LOOP COOLING: separate air circuits keep dry, clean enclosure air from mixing with moist, contaminated ambient air.

VIDEO SECURITY



IP NETWORK CAMERA

AUTONOMOUS REMOTE SURVEILLANCE SYSTEM.

Access real-time images at any time from any computer anywhere.

MOTION DETECTION: using in-image window-triggering, these cameras can be programmed to capture an image whenever motion is detected within a sensitive area.

E-MAIL NOTIFICATION NETWORK: cameras and video servers can be programmed to send images via e-mail at regular time intervals or in response to an alarm.

FIRE DETECTION



AIR SAMPLING SMOKE DETECTION

PROVIDES CONTINUOUS MONITORING OF SMOKE PARTICLES AT PRE-DEFINED LEVELS.

Cabinet protection can be maximized by using a laser system designed to detect overheating wiring and equipment in the pre-combustion (incipient) stage of a fire.

SPOT FIRE DETECTION

PHOTOELECTRIC SMOKE DETECTOR WITH THERMAL SENSOR AND SOUNDER.

Requires visible smoke (2.5%/foot) or fixed temperature of 57°C (135°F) to operate.

FIRE DETECTION AND SUPPRESSION SYSTEM



WHEN EXPOSED TO TEMPERATURES OVER 100°C (212°F), THE POLYMER DETECTION TUBING RUPTURES AND IN TURN THE FM-200 FIRE SUPPRESSION AGENT IS RELEASED VIA COPPER TUBING.

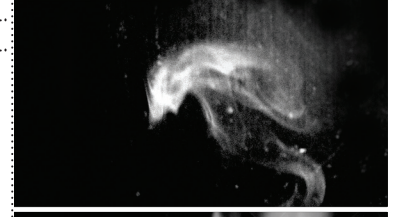
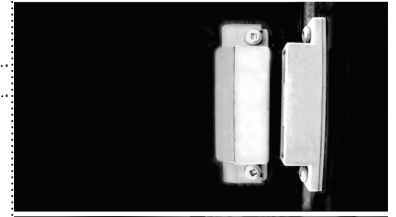
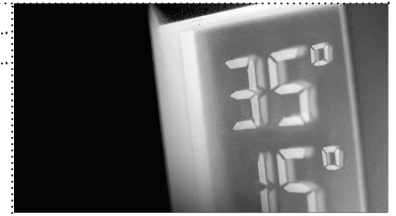
In addition to operating without electricity and interacting with the UPS systems, our fire suppression system is easy to maintain and the cost of recharging it with suppression agent is minimal.

UNINTERRUPTIBLE POWER SUPPLY (UPS)



PROVIDES EFFECTIVE POWER PROTECTION FOR YOUR CRITICAL DATA AND EQUIPMENT FROM SOME OR ALL OF THE 9 MOST COMMON POWER PROBLEMS.

Three types of UPS technologies are available: level 3, level 5 and level 9.



SELECTION GUIDE

		SerCAB 1	SerCAB 2	SerCAB 3	
STRUCTURE OPTIONS	FRAME DIMENSIONS	- 36" deep x 26" wide x 83" high (variable depth & height available)			
	MAXIMUM EQUIPMENT INSTALLATION SPACE	S	S	S	
	FRONT DOOR	44U	42U	38U	
	FRONT DOOR	- Perforated steel with single security lock	O	N/A	N/A
		- Solid steel with single security lock & standard gaskets	S	N/A	N/A
		- Solid steel with 2 lift & turn locks and rubber gaskets	O	O	O
		- Tinted acrylic with 2 lift & turn locks and rubber gaskets	O	S	S
	BACK DOOR	- Perforated steel with single security lock	O	N/A	N/A
		- Louvered with single security lock and standard gaskets	S	N/A	N/A
		- Solid steel with 2 lift & turn locks and rubber gaskets & A/C / filterfan ready	N/A	S	S
	SUPPORTS	- Levelling feet (set of 4)	S	S	S
		- Caster wheels (set of 4)	O	O	N/A
	VERTICAL PANEL MOUNTING ANGLES	(number of pairs)			
FLUSH-MOUNTED SIDE PANELS (SOLID STEEL)	- standard (no gaskets)	S	N/A	N/A	
	- standard (no gaskets) with lockable panels	O	N/A	N/A	
	- with rubber gaskets	N/A	S	S	
	- with rubber gaskets & lockable panels	N/A	O	O	
TOP COVER	- SerCAB cover	S	N/A	S	
	- SerCAB fan cover	N/A	S	N/A	
	- Raised top cover	O	O	O	
BOTTOM COVER	- Cabinet floor	O	S	S	
STRUCTURE VARIATIONS & ADD-ONS PACKAGE	<i>CABLE MANAGEMENT</i>				
	- Vertical cable management: 2.5" x 4.5"	O	O	O	
	- Vertical cable management: 2.5" x 6"	O	O	O	
	- Cable chimney: 4" x 4"	O	O	O	
	<i>SHELVING</i>				
	- Solid	O	O	O	
	- Vented	O	O	O	
	- Sliding	O	O	O	
	- Keyboard	O	O	O	
	- Drawer	O	O	O	
	<i>ELECTRICAL</i>				
	- Power strip	O	O	O	
	- Power Distribution Unit (PDU)	O	O	O	
	<i>COLOR FINISHES</i>				
	- Black, grey or computer beige	S	S	S	
	- Charcoal grey, harvest gold, ice blue, royal blue, sandy beige	O	O	O	
	COMPATIBLE OPTIONAL ENHANCEMENTS	CONTROL PANEL	O	S	S
ENVIRONMENTAL CONTROLS PACKAGE		- Temperature sensor	O	O	O
		- Water sensor	O	O	O
		- Humidity sensor	O	O	O
ACCESS CONTROLS PACKAGE		- Magnetic door contacts for status monitoring	O	S	S
		- Card reader	O	O	O
		- Keypad	O	O	O
		- Motion detector	O	O	O
VIDEO SECURITY PACKAGE		- IP camera	O	O	O
		- IP camera with motion detection	O	O	O
		- Audio link	O	O	O
VENTILATION PACKAGE		- 6" - 100 cfm whisper fans (set of 2)	O	S	S
		- 6" - 200 cfm whisper fans (set of 2)	O	O	O
		- 10" high volume filter fans (set of 2)	N/A	S	N/A
		- Fan status monitoring	O	S	O
COOLING PACKAGE		- Autonomous A/C unit	N/A	N/A	S
		- 3500 BTU (for 42" high cabinets only)	N/A	N/A	S
	- 8000 BTU	N/A	N/A	O	
FIRE DETECTION BY SPOT DETECTION PACKAGE	- Interior smoke detector	O	O*	O	
	- Exterior smoke detector	O	O	O	
FIRE DETECTION BY AIR SAMPLING PACKAGE	- Laser system smoke detector (interior and exterior)	O	O*	O	
FIRE DETECTION & SUPPRESSION PACKAGE	- Firetrace fire detection tubing	O	O*	O	
	- FM-200 extinguishing agent: 3 lbs cylinder	O	O*	O	
	- FM-200 extinguishing agent: 6 lbs cylinder	O	O*	O	
	- FM-200 extinguishing agent: 12 lbs cylinder	O	O*	O	
UPS PACKAGE	- Powerware 5115 Rack	Power Out (VA/Watts)			
	- PW5115 500 RM	O	O	O	
	- PW5115 750 RM	O	O	O	
	- PW5115 1000 RM	O	O	O	
	- PW5115 1500 RM	O	O	O	
	- PW5115 1500 RM	O	O	O	
	- Powerware 5125 Rack	Power Out (VA/Watts)			
	- PW5125 1000 RM	O	O	O	
	- PW5125 1500 RM	O	O	O	
	- PW5125 2400 RM	O	O	O	
	- PW5125 3000 RM	O	O	O	
	- Powerware 9125 Rack	Power Out (VA/Watts)			
	- PW9125 700	O	O	O	
	- PW9125 1000	O	O	O	
	- PW9125 1250	O	O	O	
	- PW9125 1500	O	O	O	
	- PW9125 2000	O	O	O	
	- PW9125 2000 20R	O	O	O	
	- PW9125 2500U	O	O	O	
	- PW9125 3000U	O	O	O	
	- PW9125 5000g	O	O	O	
- PW9125 6000g	O	O	O		

S :: standard • O :: optional • N/A :: not available * :: available soon